



Easy Tuning

USER MANUAL

Diag4Bike v15.1



www.diag4bike.com
www.actia.cz
info@actia.cz

Easy tuning:

This method is the low cost tuning represented by **EASY MODE** in tuning software **DIAG4TUNE. EASY MODE** provides the ability to **adjust Fuel Trim table, Acceleration Enrichment, Spark Advance** table manually in a limited range of +/- 20%, switch On/Off Lambda Closed Loop and Throttle By Wire speed up. Other functions are restricted.

Necessary equipment:

- + tuning dongle (blue one)
- + communication interface
- + software Diag4Bike
- + adapters



CONTENT

1. Pairing & backup

- 1.1 Connecting Diag4Bike
- 1.2 Connecting Tuning Dongle
- 1.3 Confirming and acceptance of conditions
- 1.4 Saving of original calibration

2. Easy tuning - map modification

- 2.1 Selection Easy tuning mode
- 2.2 Fuel table Modification
- 2.3 Spark advance table
- 2.4 Other settings

3. Storing to the bike

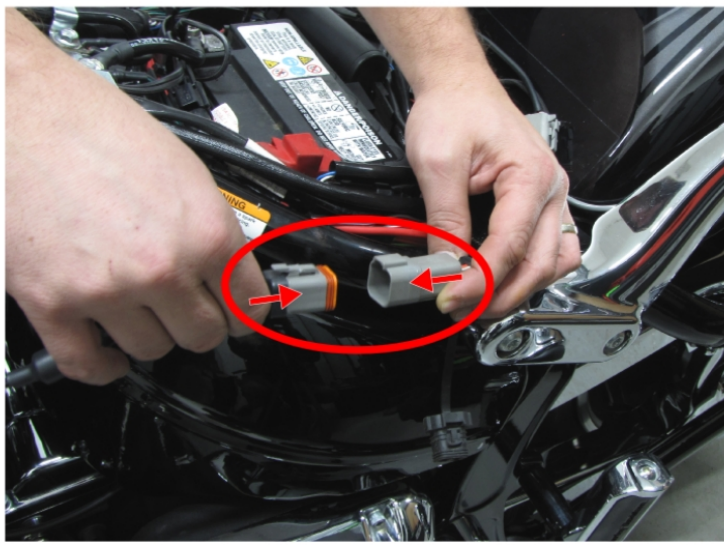
- 3.1 Storing calibration to bike
- 3.2 Close of the program

4. Restore calibration

4. Restoring calibration process

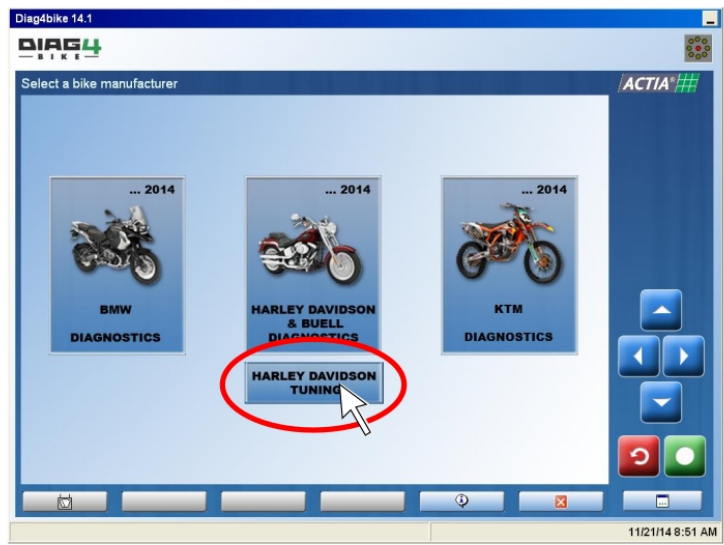
1. Pairing & backup

1.1 Connecting Diag4Bike



Connect Diag4bike to motorcycle and make sure, that the battery is well charged. For sure you can connect battery charger.

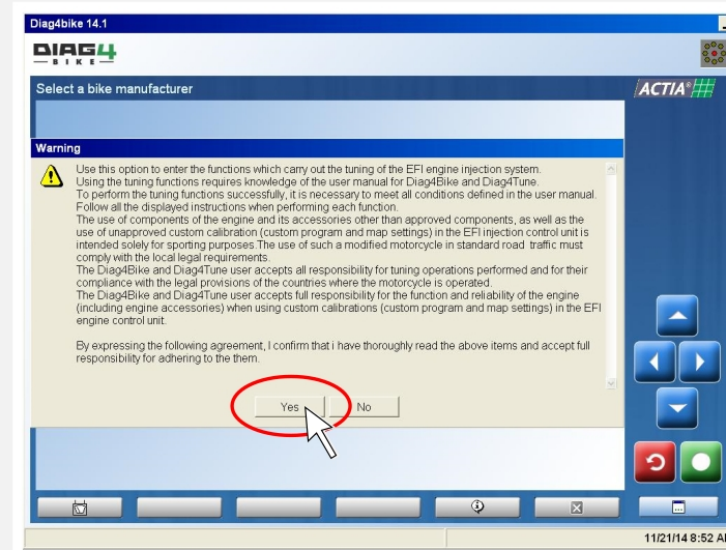
1.2 Connecting Tuning Dongle



Connect Tuning dongle (Blue) to PC and launch Diag4bike software.

(Click on **HARLEY-DAVIDSON TUNING** icon)

1.3 Confirm your acceptance of conditions



Confirm your acceptance of conditions..

1.4 Saving of original calibration



Switch ON bike ignition and click on icon **Pairing & Backup**. (In this step, original calibration from bike will be stored. After successful pairing, the icon **Pairing & Backup** will be changed to **Restore**)



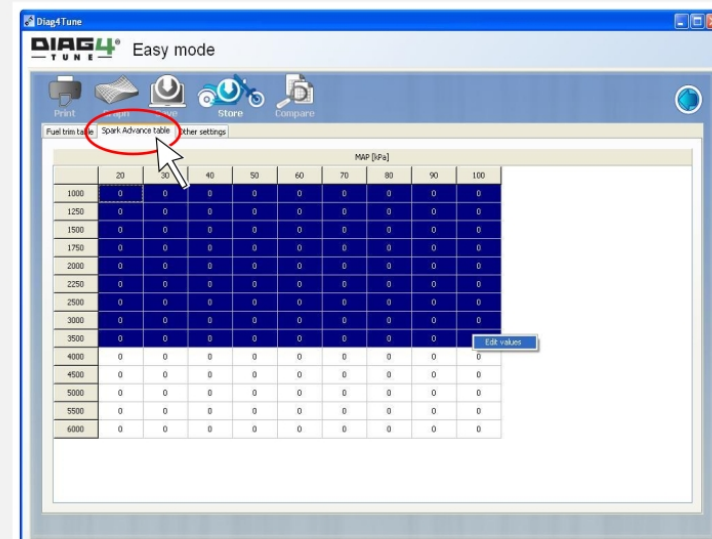
2. Easy tuning map modification

2.1 Selection Easy tuning mode



Select **Easy mode** button.

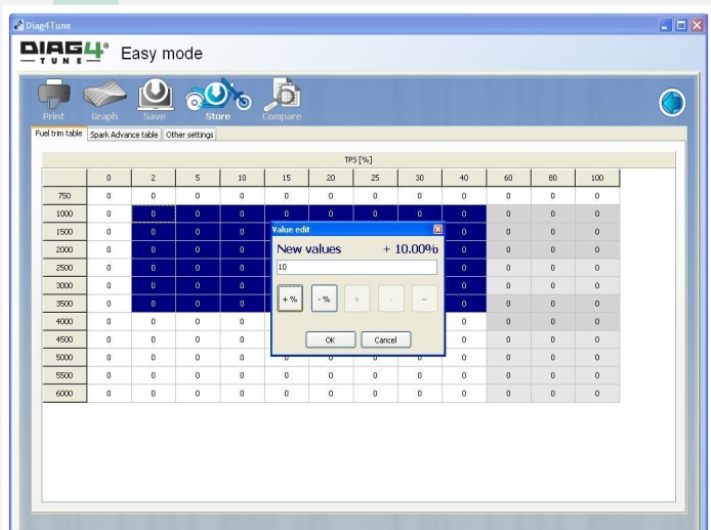
2.3 Spark advance table



In the same way you can modify the Spark Advance table.

NOTE:
We recommended the values in Spark advance table only if you really know what you are doing!

2.2 Fuel table modification

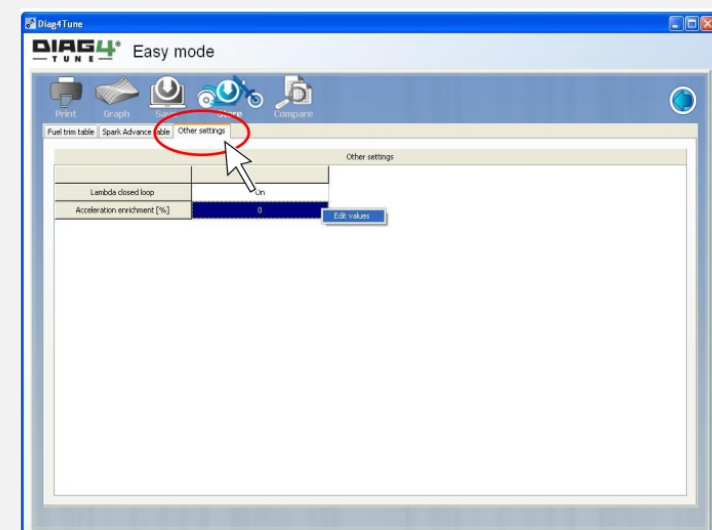


Click on Left mouse button, hold it and move by mouse in order to **select the desired area**, where you want to modify the fuel map.

When desired area is selected, click on right mouse button and select **EDIT VALUES**.

Enter desired value for selected location and click on % or -% if you want to add or remove the fuel.

2.4 Other settings



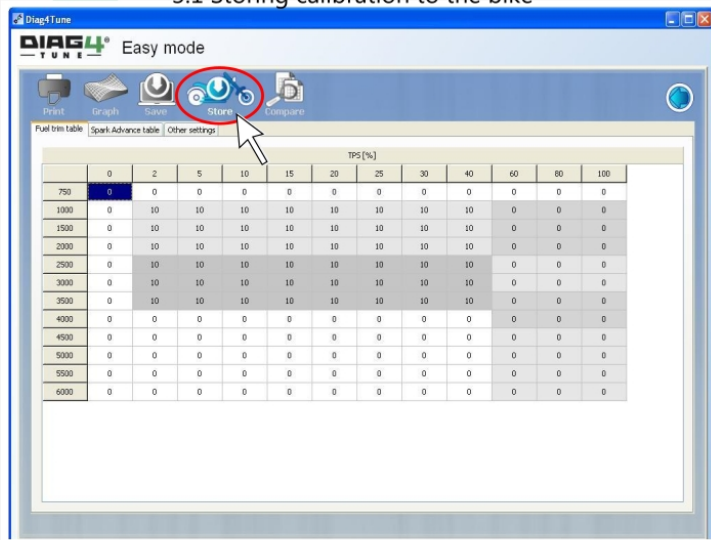
By clicking on Other settings you can:

- Switch ON / OFF lambda closed loop
- Increase or decrease the Acceleration enrichment in %

NOTE: You can modify the complete chart - each cell separately with different value. It is only up to you, how you want to modify the fuel map.

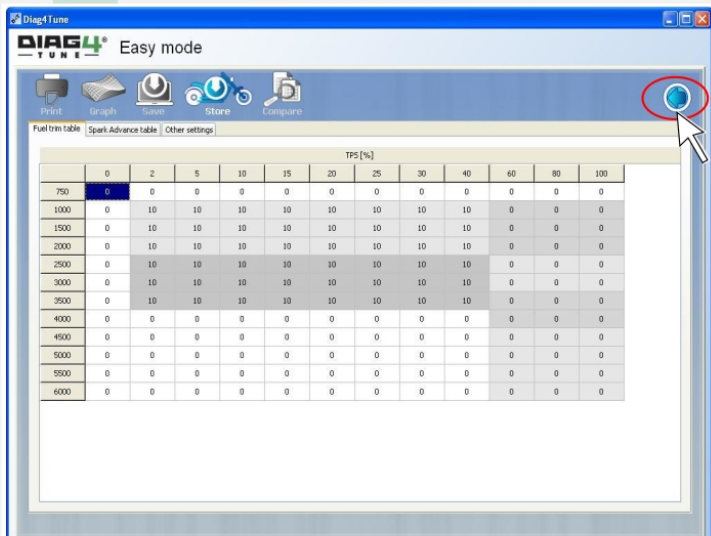
3. Storing to the bike

3.1 Storing calibration to the bike



When you finished with all the map modifications, **store the New map** to the bike by clicking on **STORE** button.

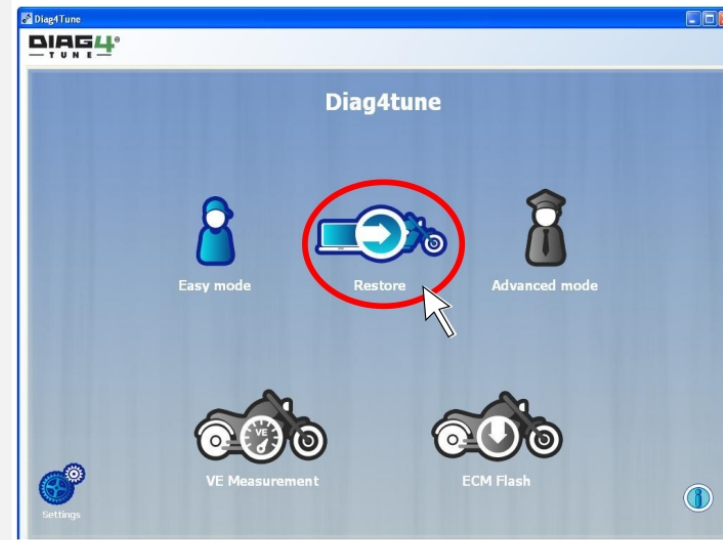
3.2 Closing of the program



By clicking on **BACK** button you will go to main menu and you can close the program.

Disconnect Diag4bike from the bike and stick the sticker "TUNED BY DIAG4TUNE" on bike.

3. Restore function



If you want to upload original calibration to the bike:

- plug Tuning dongle to PC
- connect Diag4Tune to your bike
- launch Diag4Tune software
- press **Restore** button

Original calibration will be loaded into the bike.