

DIAG4[®]

— B I K E —

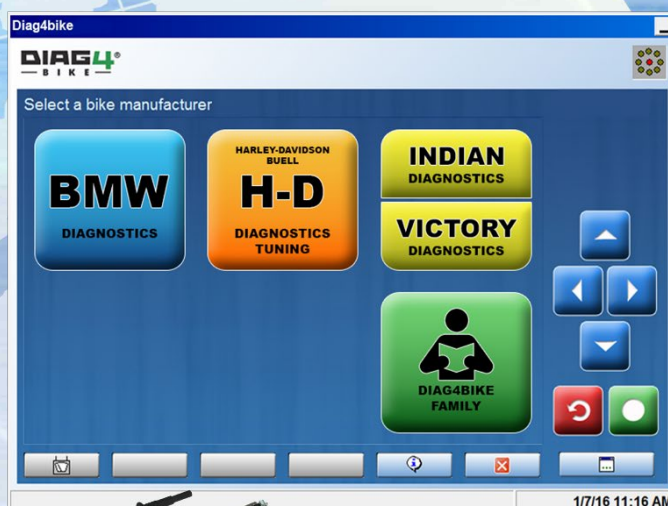
Online manuals


www.doc4bike.eu

BASIC INSTRUCTIONS

(installation from USB DISC)

SW version 22.0 and other



 Bluetooth





HELP@LINE

help@diag4bike.eu

www.DIAG4BIKE.eu



DIAG4BIKE
AT 532 5006
AT 532 5007 (BT)

Last update: 14. March 2023
Changes to Instruction Manual reserved

ATAL s.r.o., (Ltd.), Lesní 47, 390 01 Tábor - Horky, Czech Republic
Phone: +420 381 410 100;
help@diag4bike.eu; www.atal.cz; www.DIAG4BIKE.com



1. INTRODUCTION

The attached USB DISC includes all the software necessary for using the **DIAG4BIKE** system, incl. these basic instructions. It is necessary to make oneself familiar with this document in order to set the basic parameters of communication between **DIAG4BIKE** and the computer.

2. MINIMUM REQUIREMENTS FOR THE PC USED

- Windows 7, 8.1, 10
- HDD with free disc space of min. 10 GB
- RAM 512 MB (**recommended 1GB** or more)
- A free USB port
- Bluetooth (depending on the communication interface used)

3. STARTING THE INSTALLATION USB DISC – THE STARTING APPLICATION

When you insert the USB DISC into USB port in the PC/NB (see Fig. 1), the so called „**Starting application**“ (see Fig. 3) should start. If this is not started (the Autorun function is disabled/not functional), it is necessary to find the file „**Autorun.exe**“ on the USB DISC and start the „**Starting application**“ manually (see Fig. 2).



Fig. 1 – Starting the installation USB DISC



Fig. 2 – Manual start of the „Starting application“



Fig. 3 – Example of a running „Starting application“ – full version



Fig. 4 – Example of a running „Starting application“ – limited version



Fig. 5 – Available language versions of the „Basic instructions“

Description for Fig. 3 or Fig. 4:

- 1- Clicking on the icon (pos. 1) starts the installation proces of **DIAG4BIKE** – see chapter 5.1
 - 2- Clicking on the icon (pos. 2) shows the menu with a selection of available language versions (see Fig. 5) of the user manual „Basic instructions“.
 - It is recommended to read through this manual (**DIAG4BIKE** installation and configuration procedure is described here).
 - To display these manuals, presence of a program for reading files in PDF format is necessary. In case that the „**Starting application**“ detects an absence of such program, it prompts for the installation of Adobe Reader.
 - 3- Clicking on the icon (pos. 3) starts the „**Configuration**“ of **DIAG4BIKE** – see chapter 5.2
- Note:
In case that the „**Starting application**“ detects that **DIAG4BIKE** is not installed, this application will not be available (see Fig. 4)

4. DIAG4BIKELICENSING AND REGISTRATION

4.1 TEMPORARY KEY

The „**Temporary key**“ serves to bridge over the period of time before the user registers (see chapter 4.3) the purchased product **DIAG4BIKE** and receives the „**Permanent key**“ (see chapter 4.4). During this time, the user can use the **full version of program DIAG4BIKE**. Depending on the payment of a specific version of the SW, and upon submitting the VCI serial number (see Fig. 21) and the licence code (see chapter 4.2), the sales department at ACTIA CZ generates the „**Permanent key**“ (see chapter 4.4) which will be delivered electronically to the user. After inserting this key into the program **DIAG4BIKE** (see chapter 4.4), all time limitations in the system are removed, and at the same time the SW version that the user had bought is activated.

The operator is notified about the presence of the „**Temporary key**“ by a notification (see Fig. 6) immediately after the start of **DIAG4BIKE**. Further, it is recommended to the user to request **timely** the „**Permanent key**“. At the same time, the address (see pos. 1, Fig. 6) to register the program (see chapter 4.3) and to obtain the „**Permanent key**“ is indicated. Information about the validity of the „**Temporary key**“ (see pos. 2, Fig. 7) can be obtained by clicking on the „Info icon“ (see pos. 1, Fig. 7).

Important notification!

If the registration is not carried out **timely** and if the validity of the „**Temporary key**“ expires, the program operator is notified about this condition by a corresponding text (e.g. pos. 2, Fig. 7). Moreover, the program will be blocked for further use for motorbike diagnostics until registration is carried out.

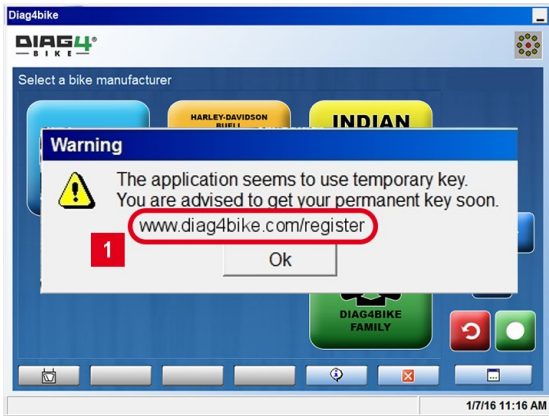


Fig. 6 – Notification of **DIAG4BIKE** that a "Temporary key" is used in the application

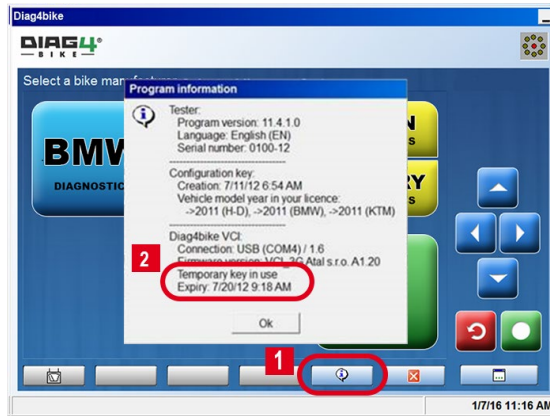


Fig. 7 – Indication of validity of the „Temporary key“ (illustrative picture)

4.2 THE LICENCE CODE AND HOW TO OBTAIN IT

The „Licence code“ is a unique number that was obtained with the purchase of **DIAG4BIKE**. This number is located inside the plastic packaging (blister) together with the USB DISC (see Fig. 8). Since this number is very important (required to obtain the „Permanent key“), it is **necessary prior to removing the security seals** (see pos. 1, Fig. 8) to inspect these thoroughly for damage or any signs of manipulation.



Fig. 8 – Blister with the USB DISC and the licence code.

After reading the „Important notification“ (see pos. 2, Fig. 8), removing the security seals (see pos. 1, Fig. 8) and opening the folded sheet of paper, the label with the „Licence code“ is shown that is located in one more security layer (see Fig. 9). By pulling the tag in the direction of the arrow (see pos. 3, Fig. 9) remove the last security layer under which the „Licence code“ itself is located (see pos. 4, Fig. 9). This code is to be inserted in the registration form (see chapter 4.3) into the field under pos. 3, Fig. 10.

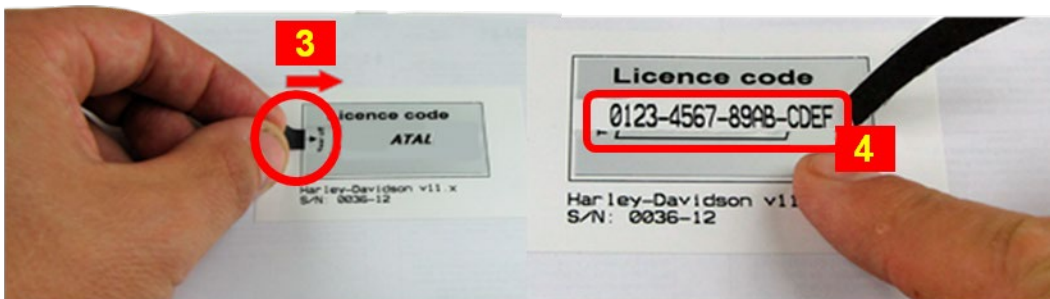


Fig. 9 – Licence code

4.3 REGISTRATION OF THE DIAG4BIKE PROGRAM

It is not a condition for the registration of **DIAG4BIKE** that the computer on which the **DIAG4BIKE** program itself is installed and to which the VCI communication interface is attached, is connected to the Internet. **Registration can be carried out from any device** with access to the Internet and to an **e-mail account**. The reason is that the „**Permanent key**“ will be sent to an e-mail address (see chapter 4.4).

Upon entering the address: **www.DIAG4BIKE.eu/register** indicated after opening the program **DIAG4BIKE** when using the „**Temporary key**“ into the Internet browser, the registration form is shown (see Fig. 10). It is necessary to fill in all required data, and thereafter to send the form to company ACTIA CZ Tábor, Czech Republic.

Based on the completion and submission of this form, the sales department of company ACTIA CZ sends (on work days, 7 AM to 4 PM, CET) the „**Permanent key**“ to the e-mail address indicated (see chapter 4.4).

- 1 - Valid e-mail address, to which the „**Permanent key**“ will be sent
- 2 - VCI communication interface serial number – see chapter 5.2.4.6
- 3 - One or more licence code(s) – see chapter 4.2 (pos. 4, Fig. 9)
- 4 - Confirmation of the data and sending of the form to ACTIA CZ

Fig. 10 – Registration form

4.4 THE PERMANENT KEY, HOW TO OBTAIN IT AND ENTER IT INTO THE PROGRAM

The „**Permanent key**“ is a unique number that was generated upon sending the completed registration form (chapter 4.3) to company ACTIA CZ Tábor, Czech Republic. The sales department sends this „**Permanent key**“ to the e-mail address that was indicated in the registration form (see pos. 1, Fig. 10). After receiving this e-mail, it is necessary to **save the send file into the computer on which the program DIAG4BIKE is installed**, eventually on a portable media (e.g. a Flash Disk) to transfer it subsequently into the computer where **DIAG4BIKE** is installed. The format of this key is shown in Fig. 11.



Fig. 11 – Example of the „Permanent key“ format

The key is associated with the configuration program through its file extension. If **DIAG4BIKE** is not installed on the computer, the yellow icon indicating the presence of **DIAG4BIKE** will be empty (will not be displayed).

The **installation** of the „Permanent key“ **itself** is simple:

4.4.1 BY CLICKING ON THE PREVIOUSLY SAVED FILE

Double-click with the left mouse button on the sent file (see Fig. 11) that was previously saved (e.g. on the monitor desktop) from the received e-mail message. After double-clicking on it, the setup program starts which carries out complete installation automatically.

4.4.2 USING THE CONFIGURATION PROGRAM

Start the configuration program (see Fig. 15). After clicking the button at pos. 2, Fig. 13 and then the button at pos. 1, Fig. 12, the ordinary Windows menu for the selection of a previously saved file (e.g. monitor desktop, Flash Disk, etc.) will be shown. After highlighting and then confirming the corresponding file (see Fig. 11), everything will already install automatically.



Fig. 12 – Button for entering the „Permanent key“

If the entering of the „**Permanent key**“ is carried out correctly, the notification about the „**Temporary key**“ (see pos. 2, Fig. 7) disappears.

5. INSTALLATION, CONFIGURATION AND CONTROL OF DIAG4BIKE

The installation is intuitive, guided by an installation wizard displayed on the PC screen. Installation of newly recognized hardware (HW) is described in chapter 5.3.

5.1 INSTALLATION OF THE DIAG4BIKE PROGRAM

- If you install the program in a computer with Windows 7, 8.1, 10 operating system, you must have administrator rights.
- Insert the USB DISC into USB port. If the USB DISC does not start the setup automatically, start program **DIAG4BIKESetup.exe** which you find on the USB DISC.
- The installation itself is intuitive, guided by an installation wizard displayed on the PC screen.
- **The installation can take up to several minutes**, and is finished only after clicking the „**Finish**“ button.

5.2 CONFIGURATION OF THE DIAG4BIKE PROGRAM

For correct function of the **DIAG4BIKE** program, the VCI (Vehicle communication interface) communication interface must be configured correctly.

Has the configuration not been carried out, or has it been prematurely terminated in the past, **each time** the program **DIAG4BIKE** is run, the operator is notified correspondingly.

5.2.1 DESCRIPTION OF CONFIGURATION SCREEN OF DIAG4BIKE

The basic screen for the setting of basic parameters is shown in Fig. 13.

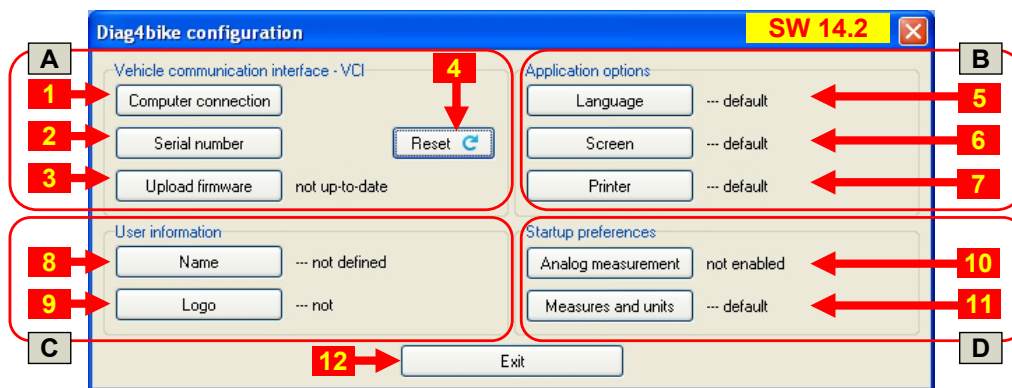


Fig. 13 – Configuration screen of the **DIAG4BIKE** program (prior to using the „VCI configuration assistant“ configuration utility) (illustrative picture)

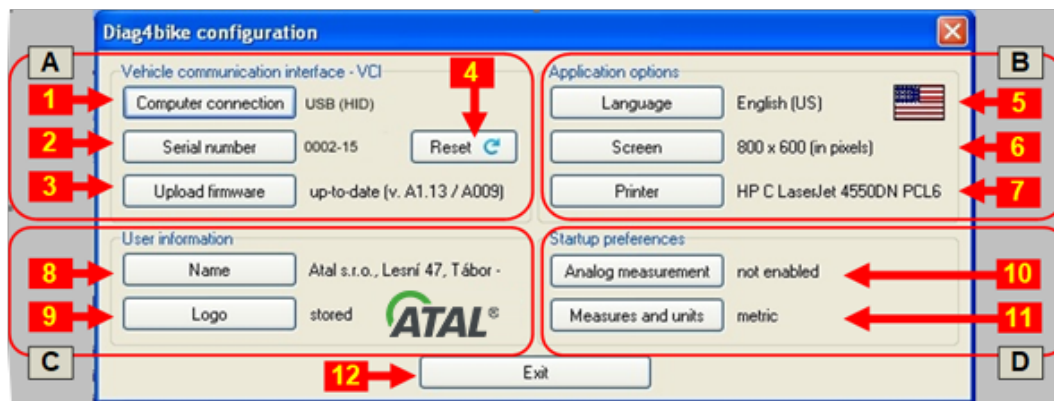


Fig. 14 – Configuration screen of the **DIAG4BIKE** program (display of current values) (illustrative picture)

Button descriptions (Fig. 13):

Section A:

- 1 - Settings of the communication with PC – see chapter 5.2.4.5 – recommended to use the „Reset“ button
- 2 - Serial number input – see chapter 5.2.4.6 – recommended to use the „Reset“ button
- 3 - Firmware update – see chapter 5.2.4.7 – recommended to use the „Reset“ button
- 4 - The „Reset“ button performs the function of searching for changes in VCI configuration, and of completing all necessary data – see chapter 5.2.4.3

Section B:

- 5 - Language selection - see chapter 5.2.4.8
- 6 - Screen resolution selection – see chapter 5.2.4.9
- 7 - Select Printer – see chapter. 5.2.4.10
(installed in Windows, or internal storage to PDF)

Section C:

- 8 - Company name – see chapter. 5.2.4.11
- 9 - Insert user's logo – see chapter. 5.2.4.12
(The name and logo are used for all printed outputs of the program)

Section D:

- 10 - Analog measurement – see chapter 5.2.4.13
- 11 - Measures and units – see chapter 5.2.4.14

- 12 - Confirmation of changes and closing of the configuration window

Note:

Configuration of Bluetooth communication interface – see chap. 5.2.5

5.2.2 VCI AUTOMATIC CONFIGURATION WITH „VCI CONFIGURATION ASSISTANT“

If you configure the program in a computer with Windows 7, 8.1, 10 operating system, you must have administrator rights.

This program is run automatically in two cases:

- a) If the configuration of the VCI device **WAS NOT** carried out (mostly after the first installation of the program).
- b) In case that the „VCI Configuration Assistant“ detects any problems with the configuration, e.g. incompliance of the series number, obsolete firmware version, etc. In this case it is recommended to click on the „Reset“ button (pos. 4, Fig. 13), and everything gets updated automatically.

Note:

The Assistant corrects only items under Section A, Fig. 13, others remain unchanged.

5.2.3 VCI MANUAL CONFIGURATION

If you configure the program in a computer with Windows 7, 8.1, 10 operating system, you must have administrator rights.

The configuration program is started by clicking on „DIAG4BIKE Configuration icon - see Fig. 15“

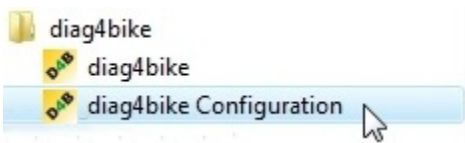


Fig. 15 – Program group DIAG4BIKE (Start \ Programs \ DIAG4BIKE ...) for running the configuration utility

5.2.4 DESCRIPTION OF THE CONFIGURATION OF THE DIAG4BIKE PROGRAM

5.2.4.1 STARTING THE „VCI CONFIGURATION ASSISTANT“

After the „VCI configuration assistant“ program is started, revision of all accessible information is carried out.

In case that information are not accessible or VCI is not connected to the computer, an information window (see Fig. 16) is displayed with a request to connect the VCI communication interface to the computer (see Fig. 20).

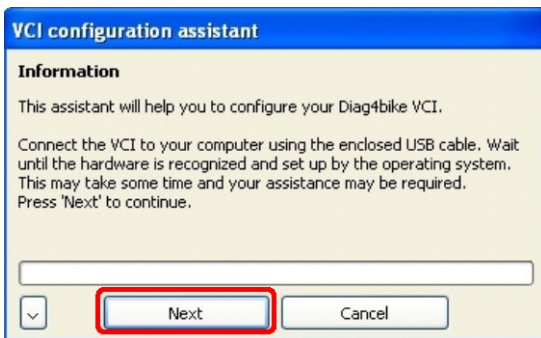


Fig. 16 – Information window with a request to connect VCI communication interface to computer (1 - AT531 5074, 2 - AT532 5006)

After the „NEXT“ button (see Fig. 16) is pressed, checking and configuration of the VCI, eventually search for a requested device (see Fig. 17) is started. If the VCI is not found (see Fig. 18) or a problem

occurs, e.g. loss of communication or power failure, an information window is displayed (e.g. Fig. 19). After the fault is eliminated, configuration will continue automatically.

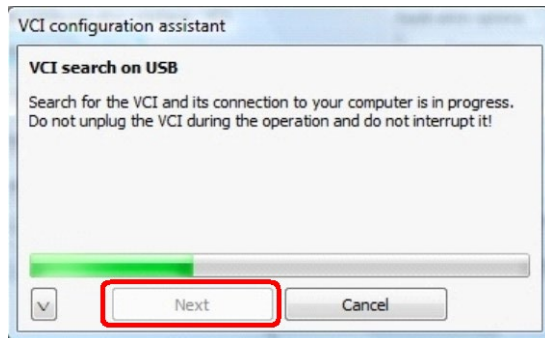


Fig. 17 – The configuration assistant is searching for VCI

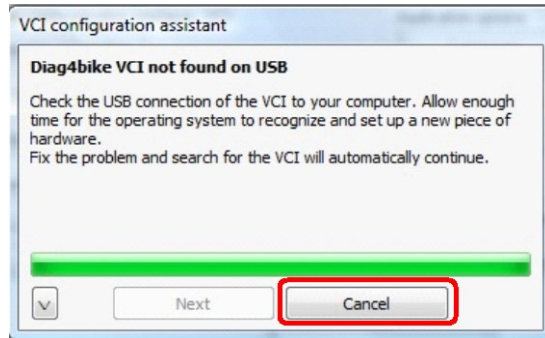


Fig. 18 – VCI was not found



Fig. 19 – Example of information window with a specific warning

5.2.4.2 INTERRUPTION OF THE „VCI CONFIGURATION ASSISTANT“

In case that the VCI configuration is ended prematurely, e.g. by turning off the computer, the operator is notified at its restart that the original configuration was not completed. Vehicle diagnostics shall not be allowed until the VCI configuration is orderly completed.

5.2.4.3 RESET OF THE „VCI CONFIGURATION ASSISTANT“

In case of a request for a new configuration, e.g. after replacement of VCI, verification of firmware update status, etc., the „Reset“ button is to be utilized (pos. 4, Fig. 13), which performs the function of searching for changes in VCI configuration, and of completing all necessary data.

5.2.4.4 CONNECTION OF THE VCI COMMUNICATION INTERFACE



After connecting the **K2** USB connector (VCI) with the **K3** USB connector (PC/NTB), the LCD **D1** turns on, indicating the connection of power supply as well as the communication with the PC/NTB itself by blinking (green/red).

Note 1:
VCI1:
D1 - green/red

VCI2:
D1 - red, **D3** - green

Note 2:
 The **D2** LCD (blue) indicates communication via Bluetooth.

Fig. 20 – Description and connection of the VCI communication interface (1 - AT531 5075, 2 - AT532 5007)

5.2.4.5 SETTING OF THE METHOD OF COMMUNICATION WITH THE PC (COMMUNICATION INTERFACE)

It is recommended to use the „Reset“ button that provides for searching for necessary data and automatically carries out all settings.

After clicking on the button (note 1, Fig. 13) another menu is displayed where the communication channel for the communication between **DIAG4BIKE** and the computer can be set.

5.2.4.6 SERIAL NUMBER INPUT (VCI SERIAL NUMBER)

To enable your diagnostic device to work, configuration of the communication interface with the vehicle must be carried out. **Therefore, you must make sure that the communication interface is configured prior to the first use.**

After clicking on the button (note 2, Fig. 13) a new window is displayed where the communication interface serial number is to be entered (see Fig. 21), e.g.: **0666-10**.

Note:

- **This number is unique for each device, and cannot be changed!**
- This must correspond with the label physically attached to the interface (see Fig. 21) as well as with the "released" number on the USB DISC, which is entered at the point of burning on the USB DISC based on the purchased license (is carried out by sales department).
- **If a program update is carried out, this dialogue window does not appear!** Necessary data are known from the previous installation.
- **If you replace the communication interface, make sure to carry out its configuration again.**
- If an incorrect serial number is entered that does not comply with the requirements, an error message is displayed.

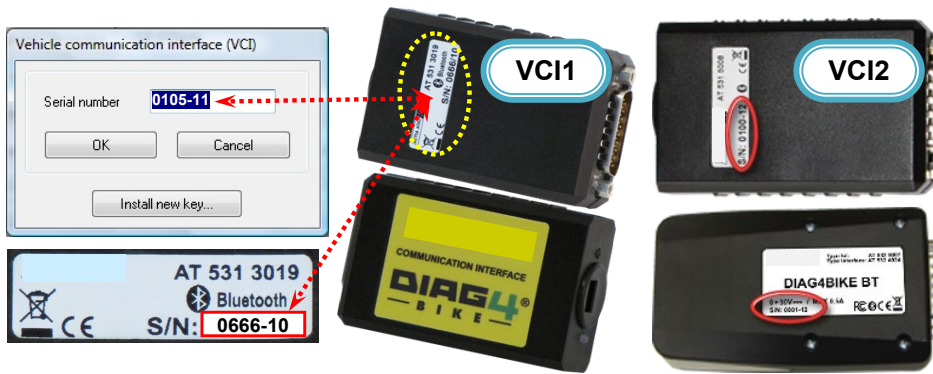


Fig. 21 – Dialogue window for entering the communication interface serial number, and its location on the label; VCI (1 - AT531 5075, 2 - AT532 5007)

5.2.4.7 FIRMWARE UPDATE (UPLOAD FIRMWARE)

The firmware update is dependent on the program version update. This can be obtained from the supplied USB DISC or by downloading it from the Internet.

If the control software, so called firmware (information received from manufacturer) must be updated, click on the „**Upload firmware**“ button (pos. 3, Fig. 13) and follow the update wizard on the screen. In this case, the „**VCI Configuration Assistant**“ does not look for so called COM-ports (communication channels), but jumps directly into the firmware update section where it searches for necessary data. The result is then displayed in an information window (see Fig. 22). In this case, it is recommended to perform firmware update. Firmware update starts after clicking on the „**Next**“ button (see Fig. 23). The result is then also displayed in an information window (see Fig. 24).

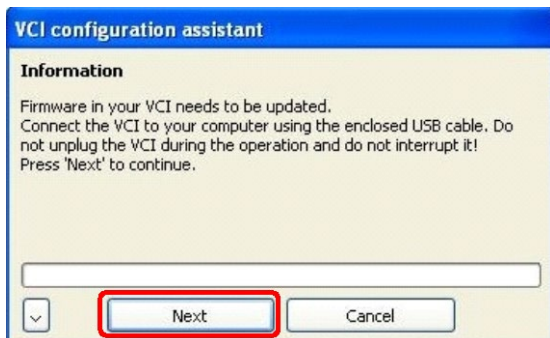


Fig. 22 – Information window with a request to carry out firmware update



Fig. 23 – Information window about the process of firmware update



Fig. 24 – Information window about a positive result of firmware update

Another possibility for the update is to use the „**Reset**“ button (pos. 4, Fig. 13), that starts inspection of parameter settings for the communication interface - including the so called COM ports (communication channels) - see chapter 5.2.4.5. Then the current firmware version in the communication interface is compared to the one in the new program version. Based on this, it is determined whether the firmware should be updated or not (see Fig. 22). In this case, it is recommended to perform firmware update.

Firmware update starts after clicking on the „Next“ button (see Fig. 23). The result is then also displayed in an information window (see Fig. 24).

5.2.4.8 LANGUAGE SELECTION (APPLICATION LANGUAGE)

After clicking on the button (note 5, Fig. 13) a dialogue window for language selection is displayed.

5.2.4.9 SCREEN RESOLUTION SELECTION (SCREEN OPTION)

After clicking on the button (note 6, Fig. 13) a dialogue window for screen resolution selection is displayed.

5.2.4.10 SELECT PRINTER

After clicking on the button (see. 7, Fig. 13) a dialogue window for printer selection is displayed. The settings is used for all reports, graphs etc. (it is independent on the windows settings).

Possibilities to select:

- a) Windows printer
- b) internal PDF writer

All documents are saved directly to PDF files which are in the user documents directory "DIAG4BIKE\PDF". A name always consist date and time of file creation. Files are not deleted automatically. It is on user.

5.2.4.11 COMPANY NAME

After clicking on the button (see. 8, Fig. 13) a dialogue window for insert company name is displayed.

5.2.4.12 INSERT USER'S LOGO

After clicking on the button (see. 9, Fig. 13) a dialogue window for insert user's logo is displayed (is printed in reports). User's logo resolution (bmp, jpeg, png, gif, tiff) will be corrected automatically.

5.2.4.13 ANALOG MEASURING

Measuring with an analog voltmeter is enabled / not enabled by clicking on the corresponding button (pos. 10, Fig. 13).

5.2.4.14 MEASURES AND UNITS

After clicking the button (pos. 11, Fig. 13), measurement units and measures can be set.

5.2.5 CONFIGURATION OF BLUETOOTH COMMUNICATION INTERFACE

Notification: Prior to configuring the Bluetooth communication device, this must be connected with the vehicle.

For correct function of the application with communication interface using wireless Bluetooth technology, this connection must be configured correctly. For this, the required computer hardware support must be provided. With many portable computers, the hardware is installed internally, for others, an external device is necessary, usually in the form of a USB adapter.

It is necessary to choose such a device which supports the **Serial Port Profile (SPP)**. The specific procedure will depend upon the operating system in the computer and the software supporting the Bluetooth device in the computer, the so called Bluetooth stack.

Generally, it is necessary to let the PC find the device, pair it correctly with the PC, assign the serial channel service to it, and identify the assigned communication port.

To carry out the pairing, a password is required that is given for each communication interface by its serial number, e.g. the password for serial number 0666-10 is 066610 (i.e. six numbers without hyphen). This general procedure is illustrated in the following based on several specific examples. In case of any troubles, proceed in line with the Operating Instructions for the device and the software in question.

5.2.5.1 BLUETOOTH STACK UNDER MICROSOFT WINDOWS 7 OPERATING SYSTEM

Notification: Applies for displaying the Control Panel in the Main Control Panel mode.

Bluetooth devices can be added and configured through standard services of Windows 7 operating system by selecting the item:

Control Panel/Hardware and Sound/Devices and Printers/Add Bluetooth Device

The next window displays the Bluetooth devices found, while the communication device is identified by an icon (see Fig. 25)



Fig. 25 – Communication interface icon

After selecting the figure (icon) of the communication device and clicking the Next button, the wizard proceeds to request selection of the pairing type. Select „Let me choose my own passkey“ to display a window requesting the input of the passkey to carry out the pairing to the device (see Fig. 26).

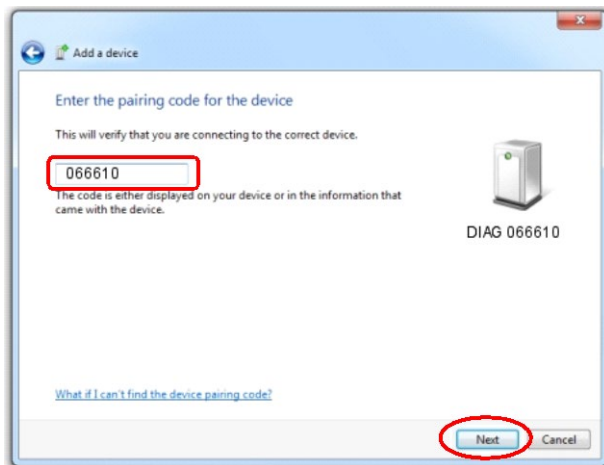


Fig. 26 – Pairing code request window

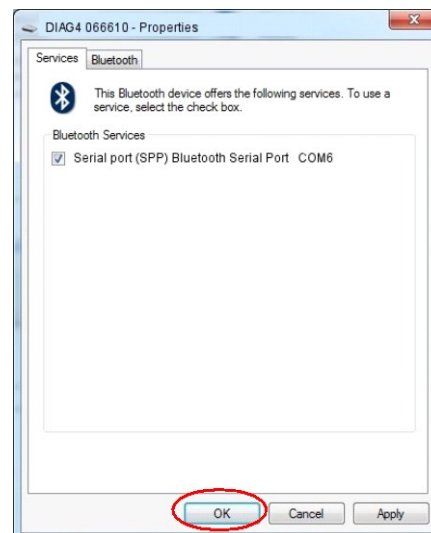


Fig. 27 – Assigned interface port window

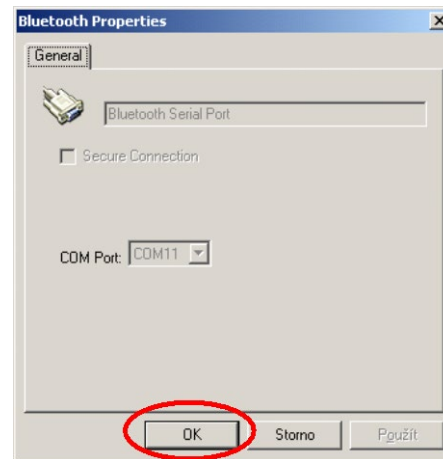
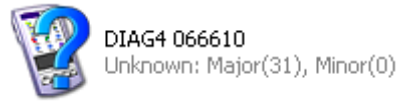
A successful „pairing“ is identified by a notification on the screen.

The assigned communication port can be displayed by selecting: **Control Panel/Hardware and Sound/Devices and Printers** then by pressing the right mouse button with mouse pointer over the corresponding device, and clicking the Properties command and then the tab Services (see Fig. 27)

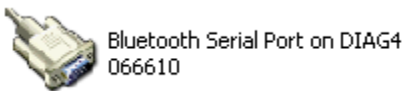
5.2.5.2 WIDCOMM VERSION 5.1

Using the Bluetooth icon in the notification area (or through menu „Start“, „Programs“) open folder „My Bluetooth Places“ where we select the option „Find Bluetooth Devices“. Program Explorer opens a folder where among the devices found also the required communication interface should be displayed and identified by the name DIAG4 and the serial number. Display the local menu using the right mouse button and select „Pair Device“ to carry out the pairing (use the serial number as the passkey, in our case 066610).

Double-click the icon (see figure at right) to display the available services for this devices which is just the serial port profile.

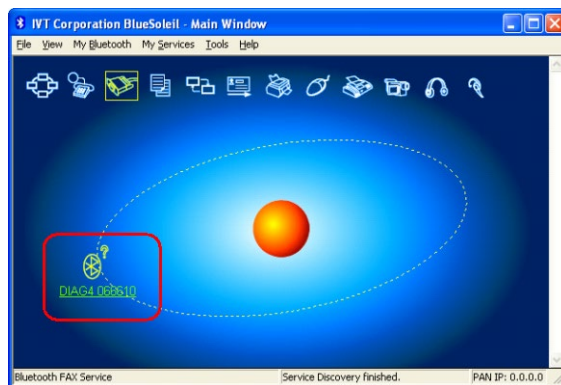


Under „Properties“ in the local menu, the assigned serial port can be displayed; COM11 in the example shown. By double-clicking the icon, the link can be established, checked for functionality, display the signal strength, etc.



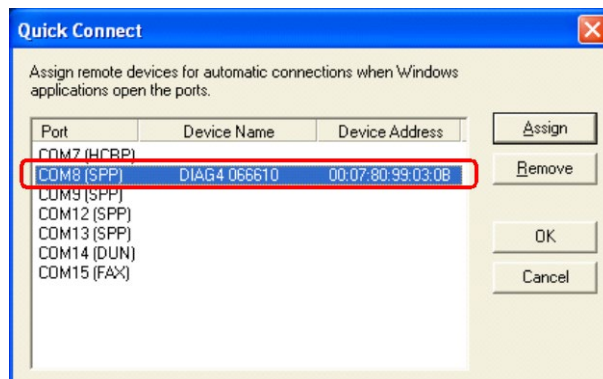
5.2.5.3 BLUESOLEIL VERSION 2.7

When the search for devices in vicinity is finished, the main application panel displays also the communication interface identified by name DIAG4 and its serial number (0666-10 in the attached figure). Open the local menu using the right mouse button, and select „Pair device“ to carry out the pairing. Input the passkey (066610) and a corresponding red mark is displayed next to the icon (see figure at right).



Now, the device must be configured in such a way, that it always connects correctly as a serial port based on application needs.

This is done by selecting the „Tools“ option from the main menu, then „Configuration“ and „Quick connect ...“. Using the „Assign“ button, the required device is then assigned to one of the serial ports with SPP service. The result is then a situation similar to the following figure (see figure at right).



The application shall use a virtual serial port COM8 for the communication. A check can be

carried out by directly establishing the link to the communication interface.

5.3 INSTALLATION OF A NEWLY IDENTIFIED DEVICE (HARDWARE – CONNECTION TO USB PORT)

When any installation of programs from the **DIAG4BIKE** family is successfully completed and any **USB device from ACTIA CZ** is connected to USB ports of the PC, information about newly found hardware (HW) shall be displayed shortly in the form of so called „Info bubbles“ (see Fig. 28).

Note:

The language used within the wizard is based on the Windows system language variant.

When the added device is successfully installed, the last information bubble informing about this status is displayed (see Fig. 29)



Fig. 28 – Example of an Information bubble about finding a new device



Fig. 29 – Information bubble about a successfully added device

5.4 STARTING THE DIAG4BIKE PROGRAM

With a successful installation of the program, a new program group named **DIAG4BIKE** is created (see Fig. 30), eventually, the icon **DIAG4BIKE** is added to a group created previously by another program, and it is created on the screen desktop (display) (see Fig. 31).

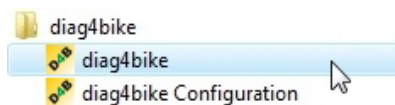


Fig. 30 – Program group **DIAG4BIKE** (Start \ Programs \ ...) for starting the application



Fig. 31 – **DIAG4BIKE** application icon on screen desktop

The program can be started by clicking the **DIAG4BIKE** icon on the screen desktop (see Fig. 31), eventually the **DIAG4BIKE** item from program group „Start\Programs“ (see Fig. 30).

5.5 CONTROLLING THE DIAG4BIKE APPLICATION

The **DIAG4BIKE** application in all function modes is controlled by the mouse pointer and the left mouse button. In case of touch screens, it is controlled by touching the corresponding symbols with the "control stylus" or by sliding the "stylus" over the screen.

Controlling the application is intuitive, and it uses established practices of the Windows operating system.

6. WARRANTY AND LIABILITY

Warranty conditions are subject to legal regulations of the country of purchase of the **DIAG4BIKE** system; one-year warranty is provided as standard.

The manufacturer is not liable for damages occurred through the use of the **DIAG4BIKE** system. As warranty certificate, the purchase receipt, eventually a warranty certificate issued by the device manufacturer is acceptable.



ATAL s.r.o., Lesní 47, 390 01 Tábor - Horky, Czech Republic
 Tel.: +420 381 410 100;
 e-mail: info@atal.cz; web: http://www.atal.cz

EC DECLARATION OF CONFORMITY

We

ATAL, s. r.o; Lesní 47; 390 01 Tábor- Horky; Czech Republic;
 REG. NO: 47216719

declare that the following product

DIAG4BIKE

Type/model: AT 532 5006
 AT 532 5007 (BT)

device dedicated for motorbike diagnostics and tuning

complies with the essential protection requirements of the EMC Directive of the European Parliament 2004/108/EC on the approximation of the laws of Member States relating to electromagnetic compatibility. Assessment of compliance of the product with the requirements relating to electromagnetic compatibility was based on the following standards

- EN 55022 ed.3:11
- EN 55024 ed.2:11

and test report No. 303350 – 01/01 of 21.08.2013 issued by Electrotechnical Testing Institute in Prague.

Tábor, 27 May 2022

Ing. Josef Hořejší, CEO
 tel.: 381 410 100
 www.atal.cz
 ATAL s.r.o. (Name)
 Lesní 47, 390 01 Tábor-Horky
 IČO: 47216719 / DIČ: CZ47216719

1 of 1



ATAL s.r.o., Lesní 47, 390 01 Tábor - Horky, Czech Republic
 Phone: +420 381 410 100;
 e-mail: info@atal.cz; web: http://www.atal.cz

DECLARATION OF CONFORMITY

Vehicle Communication Interface DIAG4

Brand name: DIAG4BIKE (USB)
 DIAG4BIKE BT (USB + BT)
 Model No.: AT 532 5006 (USB)
 AT 532 5007 (USB + BT)

(Product identification)

The DoC is only valid in connection with Test Report Number: GOM-1403-3660-EF01-V01

(Equipment information)

47 CFR Part 15 Subpart B
 Contains FCC ID: QOQWT111A (USB+BT Variant)

(Standard to which conformity is declared)

Responsible party (must be located in the US):

HardDrive | Western Power Sports
 601 E. Gowen Road
 Boise, ID 83716
 United States of America
 Jordan Ophaug
 208-376-8400
 logistics@wps-inc.com

(Name / Address / Phone)

The device complies with Part 15 of the FCC Rules. Operation is subject to the following two conditions

- (1) this device may not cause harmful interference, and
- (2) this device must accept any interference received, including interference that may cause undesired operation.

Tábor, January 30, 2023

(Place, date)

ATAL s.r.o.
 Lesní 47, 390 01 Tábor-Horky
 IČO: 47216719 / DIČ: CZ47216719

Ing. Josef Hořejší, CEO

(Name)



ATAL s.r.o., Lesní 47, 390 01 Tábor - Horky, Czech Republic
 Phone: +420 381 410 100;
 e-mail: info@atal.cz; web: http://www.atal.cz

DECLARATION OF CONFORMITY

Vehicle Communication Interface DIAG4

Brand name: DIAG4BIKE (USB)
 DIAG4BIKE BT (USB + BT)
 Model No.: AT 532 5006 (USB)
 AT 532 5007 (USB + BT)

(Product identification)

The DoC is only valid in connection with Test Report Number: GOM-1403-3660-EF01-V01

(Equipment information)

47 CFR Part 15 Subpart B
 Contains FCC ID: QOQWT111A (USB+BT Variant)

(Standard to which conformity is declared)

Responsible party (must be located in the US):

Griffin Tools & Supply, LLC
 138 Witmer Place, Long Branch, NJ 07740
 Bob Griffin ((847) 651-3099)

(Name / Address / Phone)

The device complies with Part 15 of the FCC Rules. Operation is subject to the following two conditions

- (1) this device may not cause harmful interference, and
- (2) this device must accept any interference received, including interference that may cause undesired operation.

Tábor, January 30, 2023

(Place, date)

ATAL s.r.o.
 Lesní 47, 390 01 Tábor-Horky
 IČO: 47216719 / DIČ: CZ47216719

Ing. Josef Hořejší, CEO

(Name)