

DIAG4[®]

— T U N E —

Advanced Tuning

USER MANUAL

Diag4Bike v14.1



www.diag4bike.com

www.actia.cz

atal@atal.cz

Advanced tuning:

By this method of the tuning it is possible to use full range of tuning functions. The method provides ability to use an embedded database of calibrations. These calibrations (maps) are pre-set for several configurations of exhaust and intake components (open exhaust, intake and combinations). Advanced tuning method provides important improvement of engine functions.

Necessary equipment:

- + tuning dongle (orange one)
- + communication interface
- + software Diag4Bike
- + adapters



CONTENT

1. Pairing & backup

- 1.1 Connecting Diag4Bike
- 1.2 Connecting Tuning Dongle
- 1.3 Confirming and acceptance of conditions
- 1.4 Saving of original calibration

2. Advanced tuning - bike and map selection

- 2.1 Selection Advanced tuning mode
- 2.2 Bike selection
- 2.3 Maps
- 2.4 Map selection
- 2.5 Map confirming

3. AFR map setting

- 3.1 AFR map setting - Choosing pre-set recommended maps
- 3.2 AFR map setting - changing values manually
- 3.3 Entering desired values and confirming

4. Acceleration enrichment

- 4.1 Press acceleration enrichment bookmark
- 4.2 Mark values you wish to edit
- 4.3 4.3 Editing values and confirming

5. Throttle position control setting (CAN models)

- 5.1 Press Throttle position control bookmark
- 5.2 Changing Throttle position control setting - pre-set configuration
- 5.3 Changing Throttle position control setting - manually

6. Tuning completion

- 6.1 Saving a new calibration
- 6.2 Enter desire calibration name
- 6.3 Storing calibration to bike

7. Restore calibration

- 7.1 Restoring calibration process

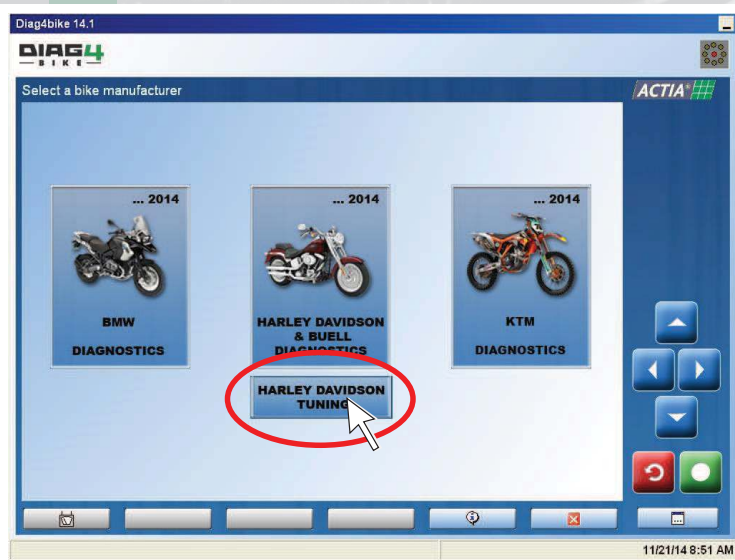
1. Pairing & backup

1.1 Connecting Diag4Bike



Connect Diag4bike to motorcycle and make sure, that the battery is well charged. For sure you can connect battery charger.

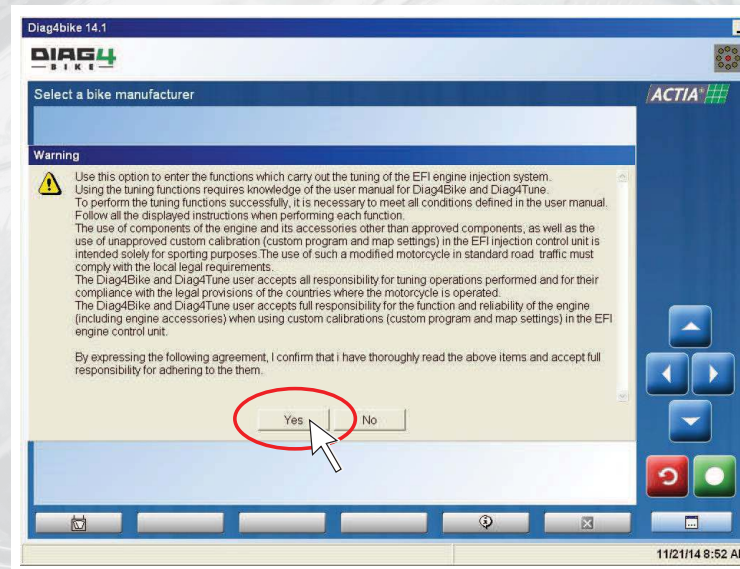
1.2 Connecting Tuning Dongle



Connect Tuning dongle (Orange) to PC and launch Diag4bike software.

(Click on **HARLEY-DAVIDSON TUNING** icon)

1.3 Confirm your acceptance of conditions



Confirm your acceptance of conditions..

1.4 Saving of original calibration

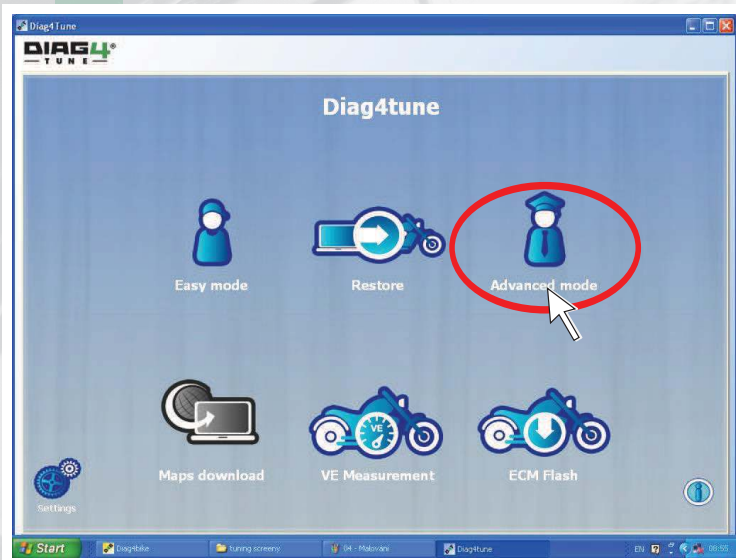


Switch ON bike ignition and click on icon **Pairing & Backup**. (In this step, original calibration from bike will be stored. After successful pairing, the icon **Pairing & Backup** will be charged to **Restore**)



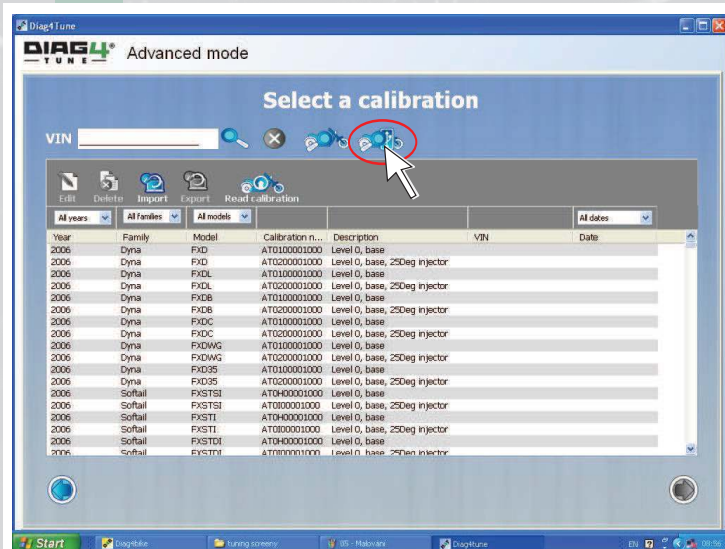
2. Advanced tuning

2.1 Selection Advanced tuning mode



Select **Advanced mode** button.

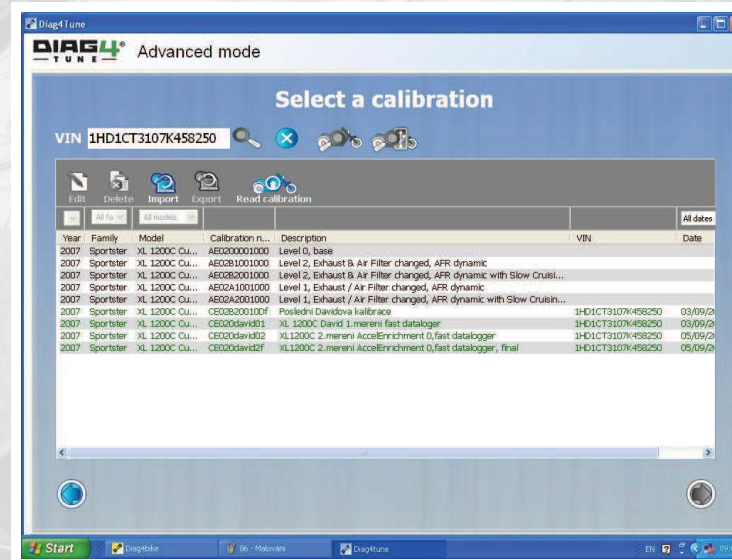
2.2 Bike selection



Click on **Read VIN from dongle** button.

NOTE:
You can also read VIN from motorcycle and enter manually.

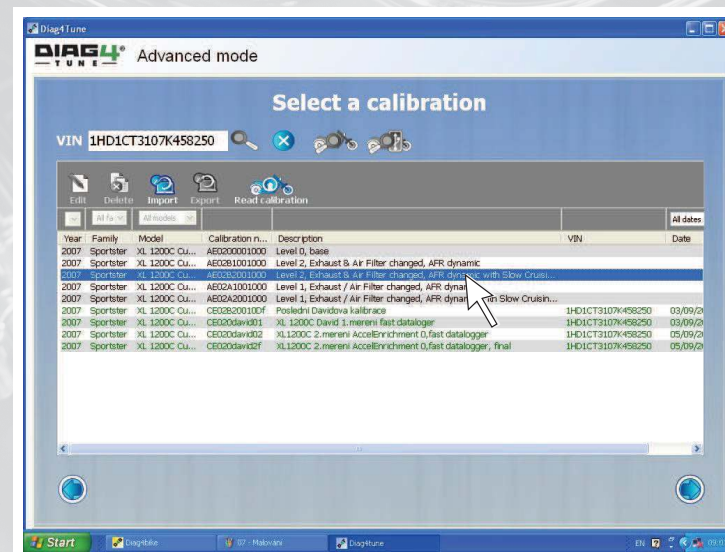
2.3 Maps



Now you can see the list of all available maps for your bike.

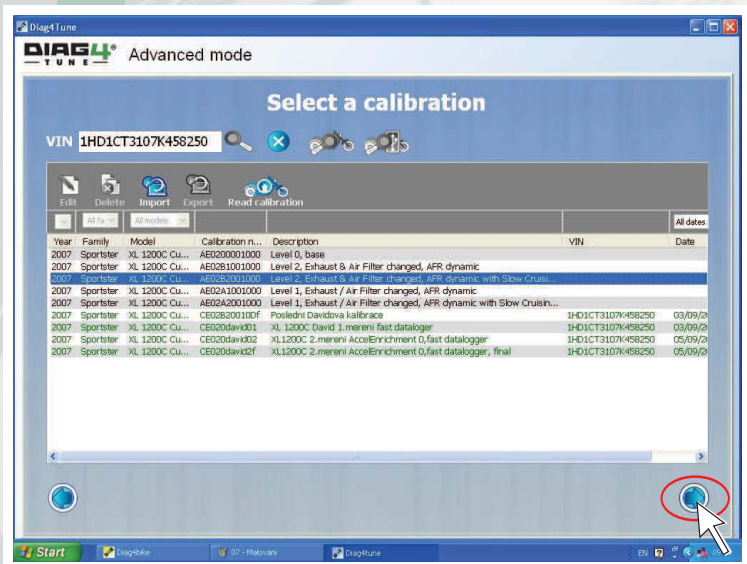
BLACK:
-stock and recommended calibration

2.4 Map selection



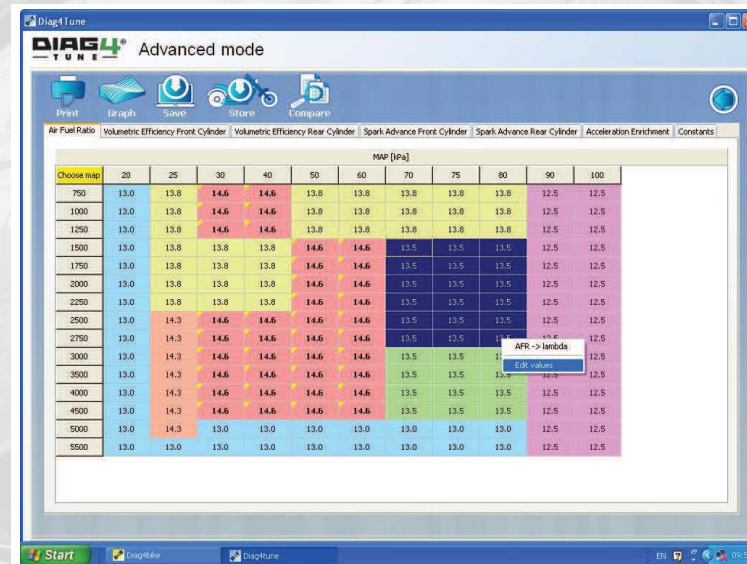
Select a map, which you want to store to the bike. You can choose a map for bike, which is equipped by exchange Exhaust, Air filter or both. You can also decide, if you want to include Slow cruising jerking compensations.

2.5 Map confirming



For confirming press **Next button**.

3.2 AFR map setting - changing values manually



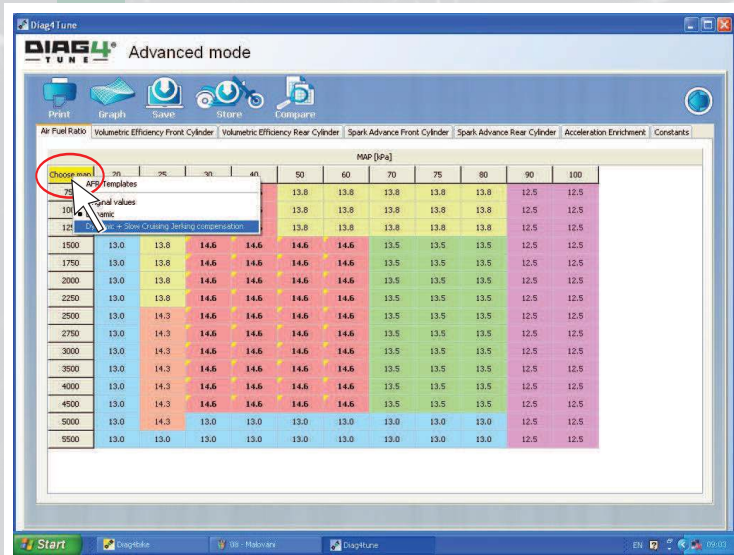
USE ONLY If you want to modify the AFR map values manually.

Mark specific area (click and hold left mouse button)
Click right button and choose Edit values.



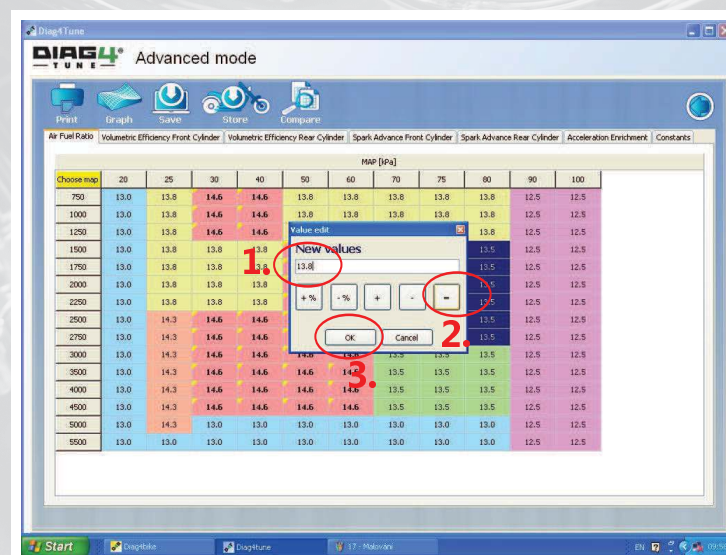
3. AFR map setting

3.1 AFR map setting - choosing pre-set recommended map



If you want to modify the AFR map, you can use our recommended AFR setting by clicking of right mouse button on yellow map. Choose map.

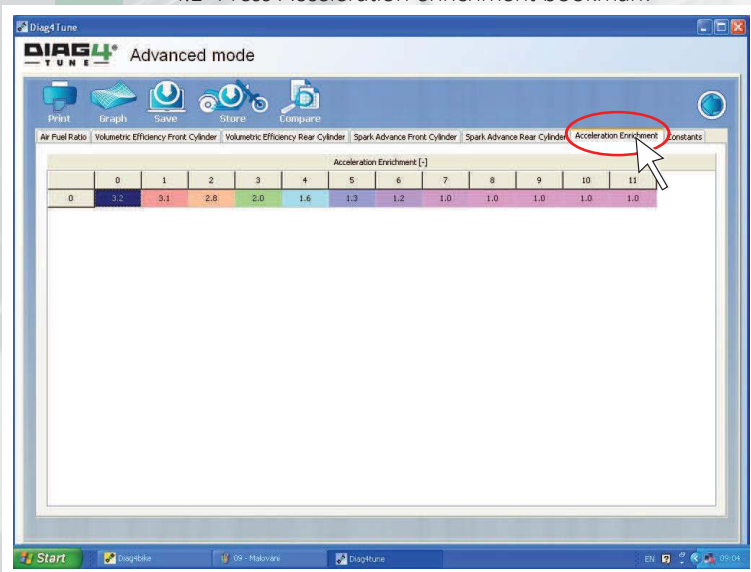
3.3 Entering desired values and confirming



Enter new value and press symbol "=" for confirming.

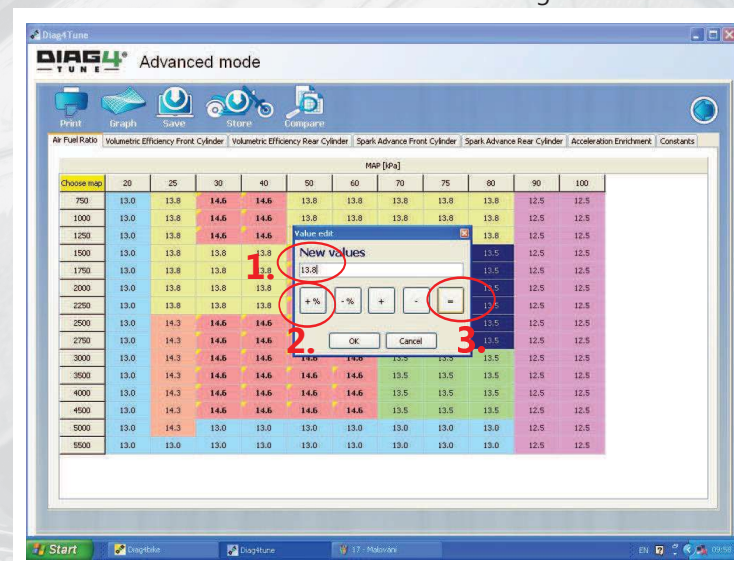
4. Acceleration enrichment setting

4.1 Press Acceleration enrichment bookmark



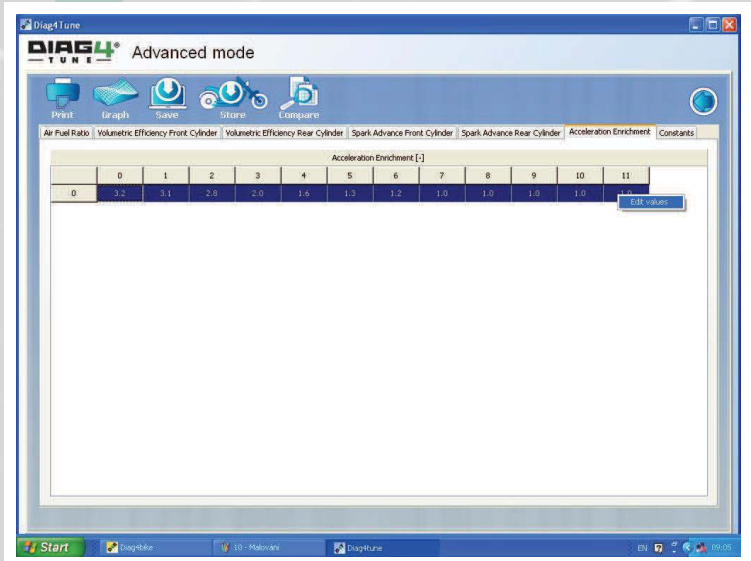
Choose Acceleration enrichment bookmark

4.3 Edit values and confirming



Type number "10" to blank field.
Press "+%" button to rise value.
Press "=" button to confirm.

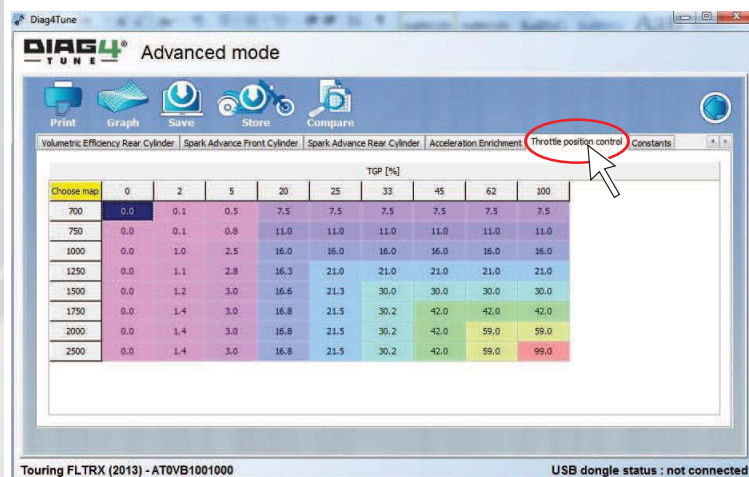
4.2 Mark values you wish to edit



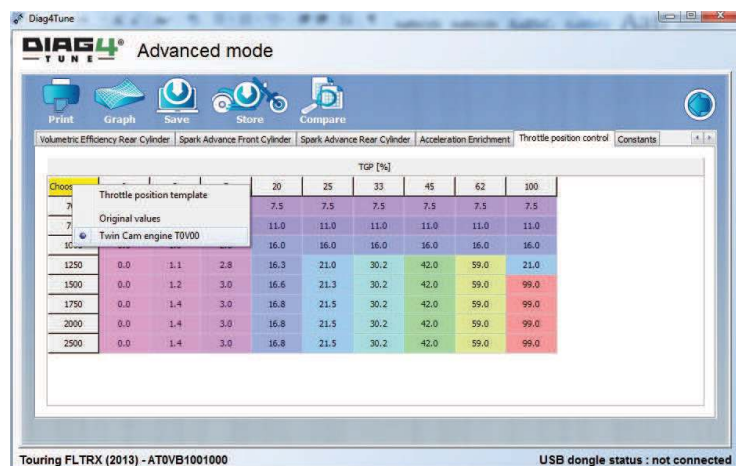
Click by left mouse button on first field, hold it and move to right.
Click right mouse button and select Edit values.

5. Throttle position control setting (CAN models)

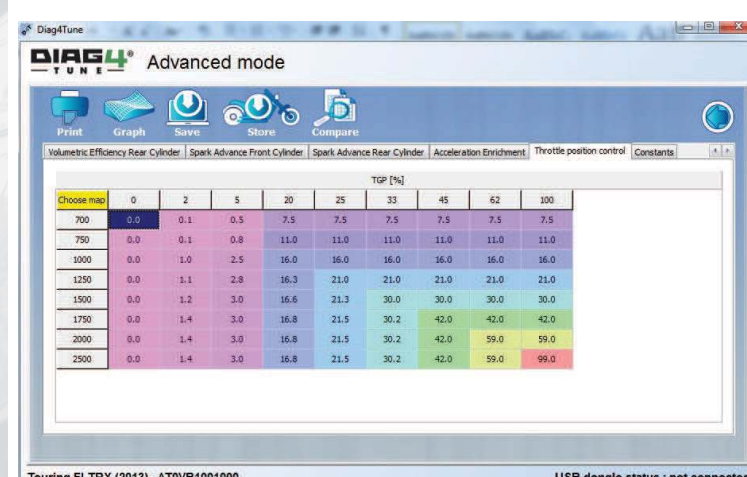
5.1 Press Throttle position control bookmark



5.2 Changing Throttle position control setting - pre-set configuration

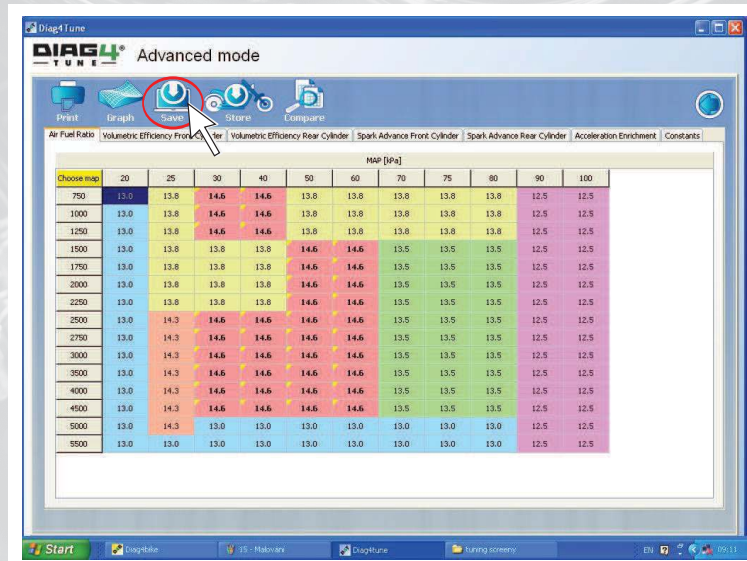


5.3 Changing Throttle position control setting - manually

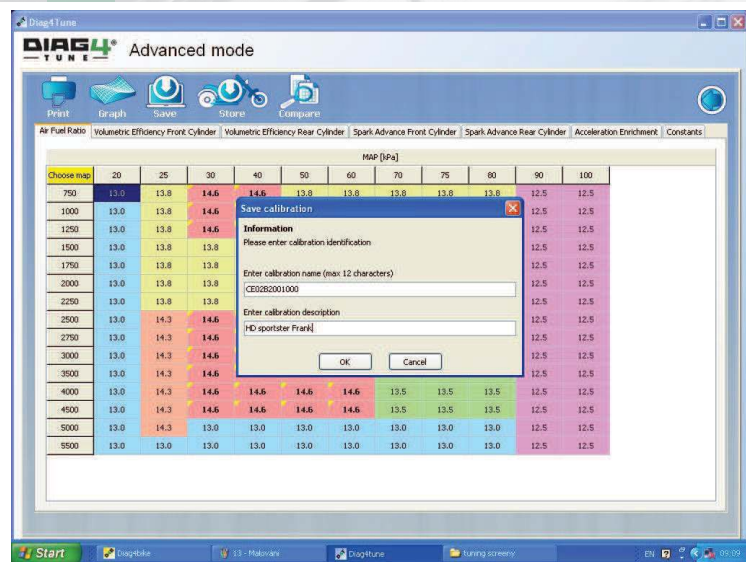


6. Tuning completion

6.1 Saving of a new calibration

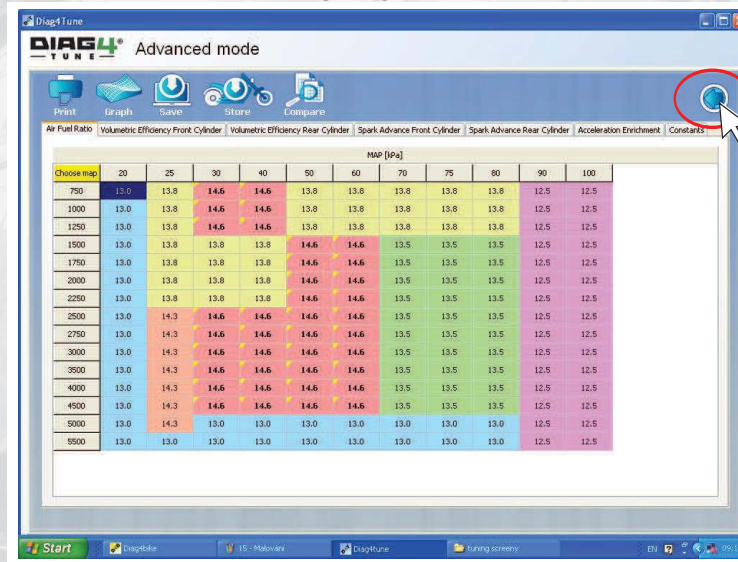


6.2 Enter name of the calibration



Enter desired calibration name and confirm by **OK** button.

6.4 Closing Diag4Bike

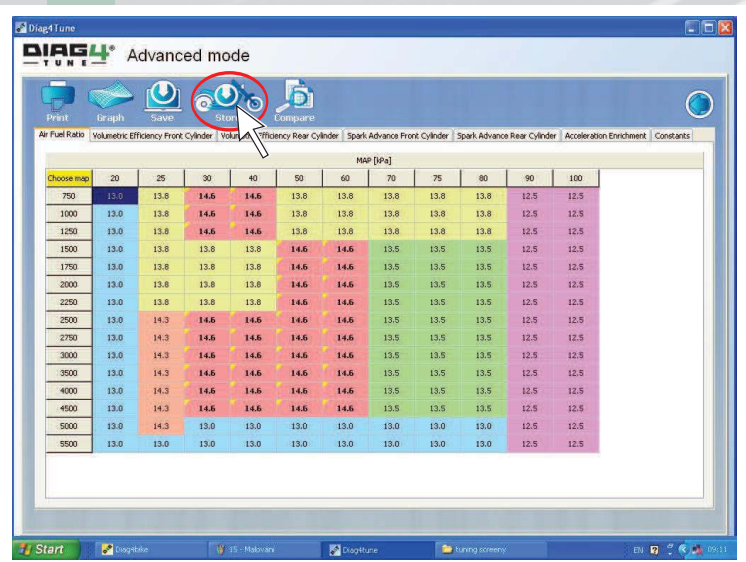


You will get to main menu by clicking to **Back** button. You can close Diag4Bike now.

Disconnect Diag4Bike from motorcycle. Place "TUNED BY DIAG4BIKE" stick on motorcycle and go for test ride.

Do not forget give the Tuning dongle to your customer.

6.3 Store the calibration to the bike



Switch ON the bike ignition and click the Store button to **store** calibration to the bike.

7. Restoring

7.1 Restoring original calibration



If you want to upload original calibration to the bike:

- plug Tuning dongle to PC
- connect Diag4Tune to your bike
- launch Diag4Tune software
- press **Restore** button

Original calibration will be loaded into the bike.